

Flanged Thermowells

Model SF, RF and HF

According ANSI/ASME or DIN 43772

Features

- Solid bore construction
- Materials according ISO 15156/NACE MR 01-75
- Selection of materials
- Standard and customer specifications
- DIN and ANSI/ASME process connections

Ratings

DIN up to PN100

ANSI/ASME up to 2500 lb/sq. in.

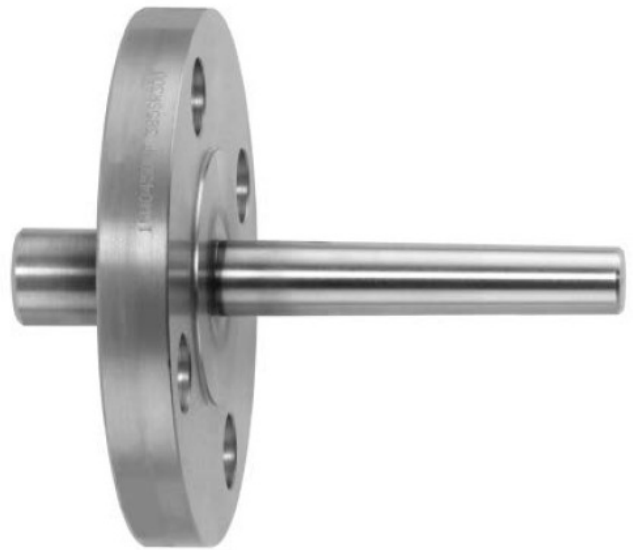
Applications

Chemical and petrochemical industry

Machine and apparatus construction

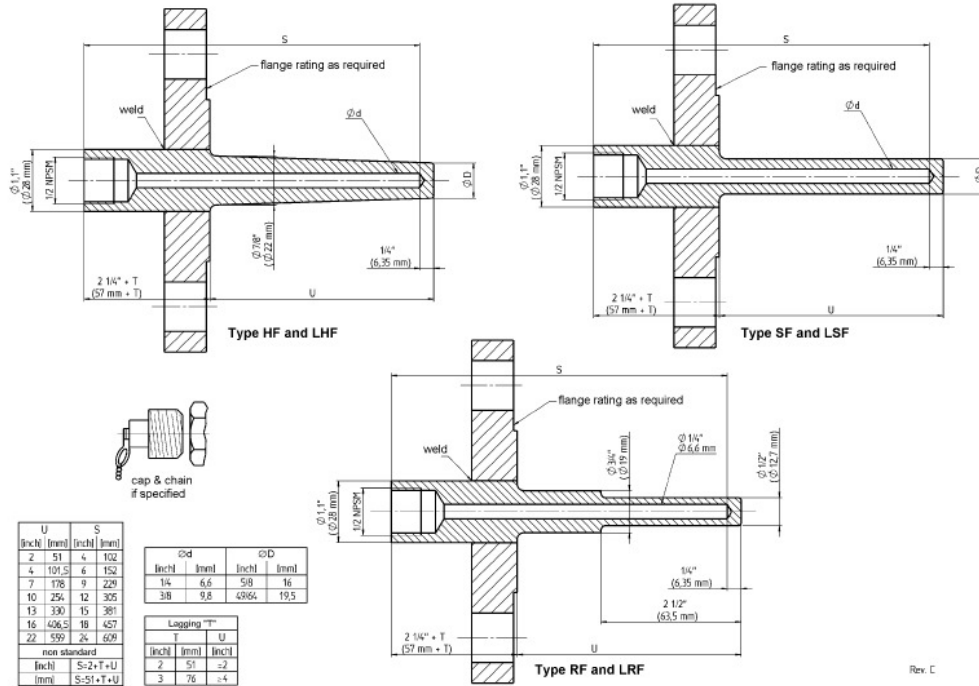
Food and beverage industry

Pulp and paper industry



Technical specification	SF	LSF	RF	LRF	HF	LHF
Solid bore design						
Construction shank	Shank solid bore, flange welded on shank standard. Optional one piece design, built up design or to customer specification					
Lagging	Straight		Stepped		Tapered	
Standard lengths	No Yes		No Yes		No Yes	
	3" (75 mm), others on request					
Standard U-length	2	4	7	10	13	16
in inch	51	101,5	178	254	330	406,5
in mm	22					
	559					
	Optional to customer specification					
Bore diameter	0,260	0,385 ¹⁾				
in inch	6,6	8,5 ¹⁾	9,8 ¹⁾	10,5 ¹⁾		
in mm	¹⁾ not for types RF and LRF					
	Others on request, see coding table					
Pressure rating	Depending on flange rating					
Process connection						
DIN	DN25, DN40, DN50, DN80, DN100, others on request					
Size	PN10, PN16, PN25, PN40, PN64, PN100, others on request					
Pressure class						
ANSI/ASME	1, 1½, 2, 3, 4, others on request					
Size	150, 300, 600, 900, 1500, 2500					
Pressure class	R (raised face), F (flat face) ¹⁾ , J (ring joint type)					
in inch	¹⁾ only for < 2500 lb/sq. in. and < 3"					
in lb/sq. in.	Other forms, connections or standards are available on request					
Facing	½ NPSM female standard, optional ½ NPT female or G ½ female					
Instrument connection						
Material	Stainless steel 304 (1.4301), 304L (1.4306), 316 (1.4401), 316L (1.4404), 316Ti (1.4571)					
	Monel, Hastelloy B, Hastelloy C, Inconel, Tantalum, Duplex, Nickel					
	Other materials or coatings on request					
Certifications & tests	Material certificate DIN EN 10 204 3.1, Hydrostatic test, dye penetration test, X-ray, Hardness test, ISO 15156/NACE certificate, stress calculation according to ASME Power Test Code 19.3 or Design Memo No. T/115					
Accessories, options	Thermometers, Pt-100, thermocouples					

General dimensions in inch (mm)



Order information

Process connection	U-length	Instrument connection	Lagging	Shank type	Bore diameter	Material ¹⁾	Flange facing	Pressure rating	Options
(10) 1" (DN25)	Inch dimension (0200) 2"	All connections are female (=) 1/2 NPSM	(=) No lagging	(HF) Standard with Welded Flange Tapered Shank	Inch dimensions (260) 0,260" (6,6 mm)	(C) 304 (1.4301)	ANSI Flange	ANSI Flange	(NF) Tagging stamped
(15) 1 1/2" (DN40)	(0400) 4"	(2) 1/2 NPT	(L) With lagging (standard 3" (75mm), other lengths to be specified in [inch] or [mm])	(SF) Welded Flange Straight Shank	(385) 0,385" ¹⁾ (9,8 mm)	(CL) 304L (1.4306)	(R) Raised face	150 300 600 900 1500 2500	(BP) Buffed and polished
(20) 2" (DN50)	(0700) 7"	(51) G 1/2		(RF) Welded Flange Stepped Shank (only bore 0,260 (6,6mm))	others on request	(S) 316 (1.4401)	(F) Flat face ¹⁾		(FL) Specify flange as per material code (e.g. FLM flange material Monel)
(30) 3" (DN80)	(1000) 10"					(SL) 316L (1.4404)	(J) Ring joint type		(CD5) NACE certificate
(40) 4" (DN100)	(1300) 13"					(M) Monel	¹⁾ only for < 2500 lbs and < 3"		(W2) Dye penetration test
	(1600) 16"					(H) Hastelloy C	DIN flange	DIN flange	(MQ) PMI test
	(2200) 22"					(N) Nickel	the flange facing depends on the process connection (nominal size and nominal pressure)		(YR...) X-ray photo
	MM dimension (... mm) length in mm				standard 6,6 mm 8,5 mm ¹⁾ 9,8 mm ¹⁾ 10,5 mm ¹⁾	(J) Duplex		PN10 PN16 PN25 PN40 PN64 PN100	Material certificates acc. DIN EN 10 204
others on request	others on request	others on request		other construction such as: Solid machined, built up and to customer specification on request	others on request	others on request			(CD2) 2.2 (C3) 3.1
									Hydrostatic internal pressure test
									(W9) 100 bar 1 min.
									(W4) To customer specification

Order example

Process connection	Type	U-length	Instrument connection	Lagging	Shank type	Bore diameter	Material	Flange facing	Pressure rating	Options
10	W	0400	=	L	HF	260	SL	R	150	X NF