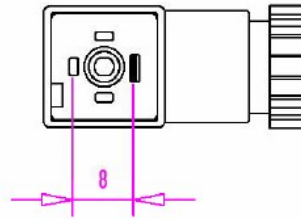


Form C
acc. to EN 175301-803 (ISO 15217)
(8mm)

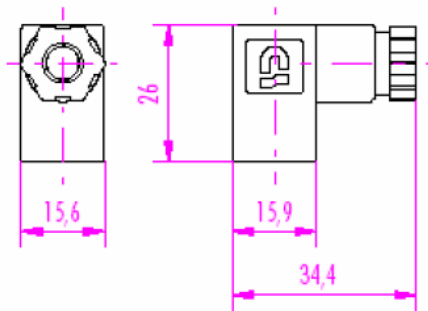
Product Code: 6-15, One-piece Housing



Technical Data

| Standard Product Features: | Special Versions as Options: |
|--|---|
| Clamping contact without wire protecting plate | — |
| Housing with M 12 connection | — |
| Colour of housing black | — |
| Colour of housing grey | — |
| Colour of housing transparent | Colour of housing natural (milky) |
| Cable gland without cable clamp | — |
| Ground position 12h | Ground position 3h, 6h, 9h |
| Central-fixing screw in St 4.8 zinc-plated | Central-fixing screw in stainless steel |
| PreCon logo in the housing | Customized logo on request |
| Packaging unit 300 pcs. | Single packaging |
| | |
| | |
| | |
| | |
| | |

Product code: 6-15
One-piece housing



Part Numbers of Standard Versions

6 - 1 5 d e f - 2 h i k

Circuit version number

00: without circuit; 01-99: see page 33; above 99 on request

Circuit version

0= without circuit or components soldered directly to the contact
5= components on the circuit board

Gasket and central-fixing screw

0= without gasket and screw
1= without gasket with standard screw
2= NBR profile gasket, standard screw
3= NBR flat gasket, standard screw
4= silicone flat gasket, standard screw

Ground position and connection

1= 6h, for cable 5-6mm
2= 12h, for cable 5-6mm

Number of poles and colour of housing

1= 2+ground, black
2= 2+ground, grey
3= 2+ground, transparent without circuit or with circuit with components soldered directly to the contact
4= 2+ground, transparent with circuit board
5= 3+ground, black
6= 3+ground, grey
7= 3+ground, transparent without circuit or with circuit with components soldered directly to the contact
8= 3+ground, transparent with circuit board