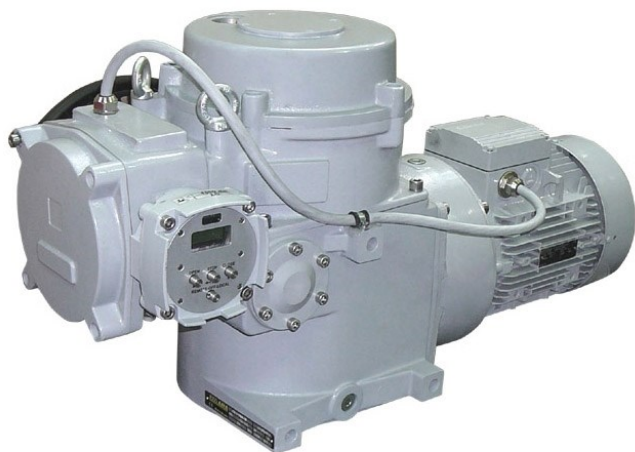


Electric Multi-Turn Actuator MOR 5PA



Type number:	158	
Switching-off torque:	300 to 1000	[Nm]
Operating speed:	15 to 100	[min ⁻¹]
Number of revolutions:	1 to 800	
Ambient temperature:	-25 to +55	[°C]
Protection enclosure:	IP 55, IP 67	
Operating position:	the motor axis should be in horizontal	
Weight:	93,5 to 103	[kg]

Standard Specification

- Supply voltage 3x400 V AC
- Terminal board connection
- Protection of the motor against overheating
- Switching off in limit positions from the position or torque
- Adjustable switching off-torque from 50% to 100%
- Torque blocking in limit positions
- Torque blocking during the start
- 7 freely programmable relays R1, R2, RE1...RE5
- 2 relays READY
- Control by unified signal 0/4 - 20 mA, 4 - 12 mA, 12 - 20 mA, or 0/2 - 10 V (not for DMS3 in 2P version)
- Control voltage for remote control 24 V DC
- Impulse control (inching duty)
- Timing mode / regime of operation
- Safety function ESD (failure reaction)
- Electronic position transmitter 4-20 mA passive (not for DMS3 in 2P version)
- Auxiliary voltage output 24 V DC, max. 100 mA for supply of the control inputs
- Output for failure messages
- Space heater operated by control unit
- LED position indicator
- Communication interface RS 232
- Programme for parameters setting by PC
- Mechanical connection - flange ISO 5210, DIN 3338
- Manual control

Options

- Local control