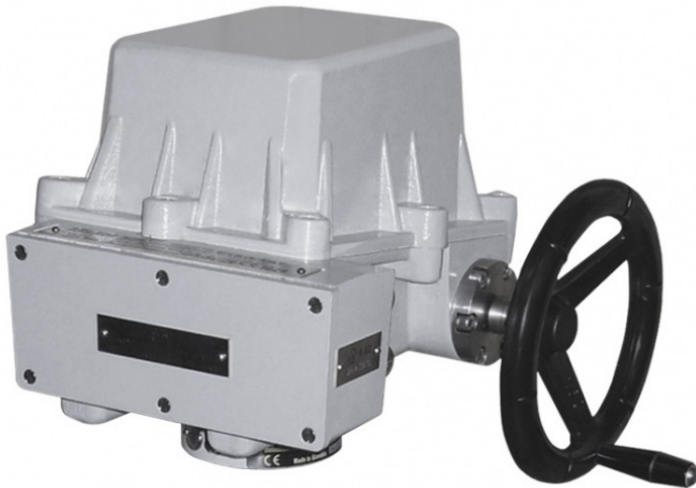


Explosion Proof Electric Part-Turn Actuator SP 1-Ex



| | | |
|-----------------------|---|---------|
| Type number: | 291 | |
| Switching-off torque: | 90 | [Nm] |
| Operating time: | 10 to 80 | [s/90°] |
| Operating angle: | 60° to 360° | |
| Ambient temperature: | -25 (-50) to +55 | [°C] |
| Protection enclosure: | IP 67 | |
| Operating position: | any position | |
| Weight: | 9 to 10,3 | [kg] |
| Explosion protection: | II 2G Ex de IIB T6 Gb II 2G c IIB T6 | |

Standard Specification

- Supply voltage 230 V AC
- Terminal board connection
- 2 torque switches
- 2 position switches
- Space heater with thermal switch
- Mechanical connection ISO 5211 - flange F05/F07
- Mechanical stop ends
- Manual control

Options

- Supply voltage 3x400 V AC, 24 V AC, 24 V DC
- 2 additional position switches
- Transmitter:- potentiometer: 1x100 Ω, 1x2000 Ω, 2x100 Ω, 2x2000 Ω
electronic position transmitter 0/4 - 20 mA, (passive/active)- CPT (capacitive) 4 - 20 mA, (passive/active)
- Positioner: 0/4 - 20 mA, 0 - 10 V
- Version with stand, lever and pull-rod