

2/2 WAY DIRECT ACTING SOLENOID VALVE, G 1/4"

COMMON FEATURES

Media: water, oil, air

Media temperature: -10°C + +130°C

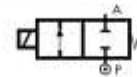
Ambient temperature: -10°C ~ +50°C

Body material: brass (CW617N EN 12165)

Operator material: stainless steel

Protection class: IP 65 (with connector and gasket)

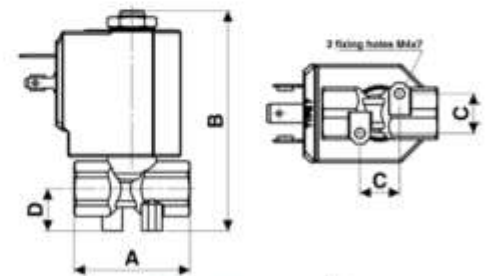
TYPE: D249



Normally Closed



DIMENSIONS & WEIGHTS		D249
G connection	[ISO 228]	1/4*
A	[mm]	38
B	[mm]	72.1
C	[mm]	13
D	[mm]	13.8
weight	[kg]	0.18



Flow direction overseat 1 → 2.

VALVE	nominal Ø	flow rate Kvs	OPD			COILS	
			min.	max. AC	max. DC	code	[Volts/Hz]
code	[mm]	[l/min]	[barg]	[barg]	[barg]		
D249DVD	1.7	1.5	0	25	24	7250	24v DC
D249DVF	2.2	2.4	0	18	16	7200	24v 50/60Hz
D249DVH *	3.0	4.5	0	10	6	7400	110v 50Hz - 120v 60Hz
						7600	200v 50Hz - 220v 60Hz
						7700	230v 50Hz - 240v 60Hz

D249 - FKM seal, NC -

Seal material: FKM

Coil power: AC 18va (holding)

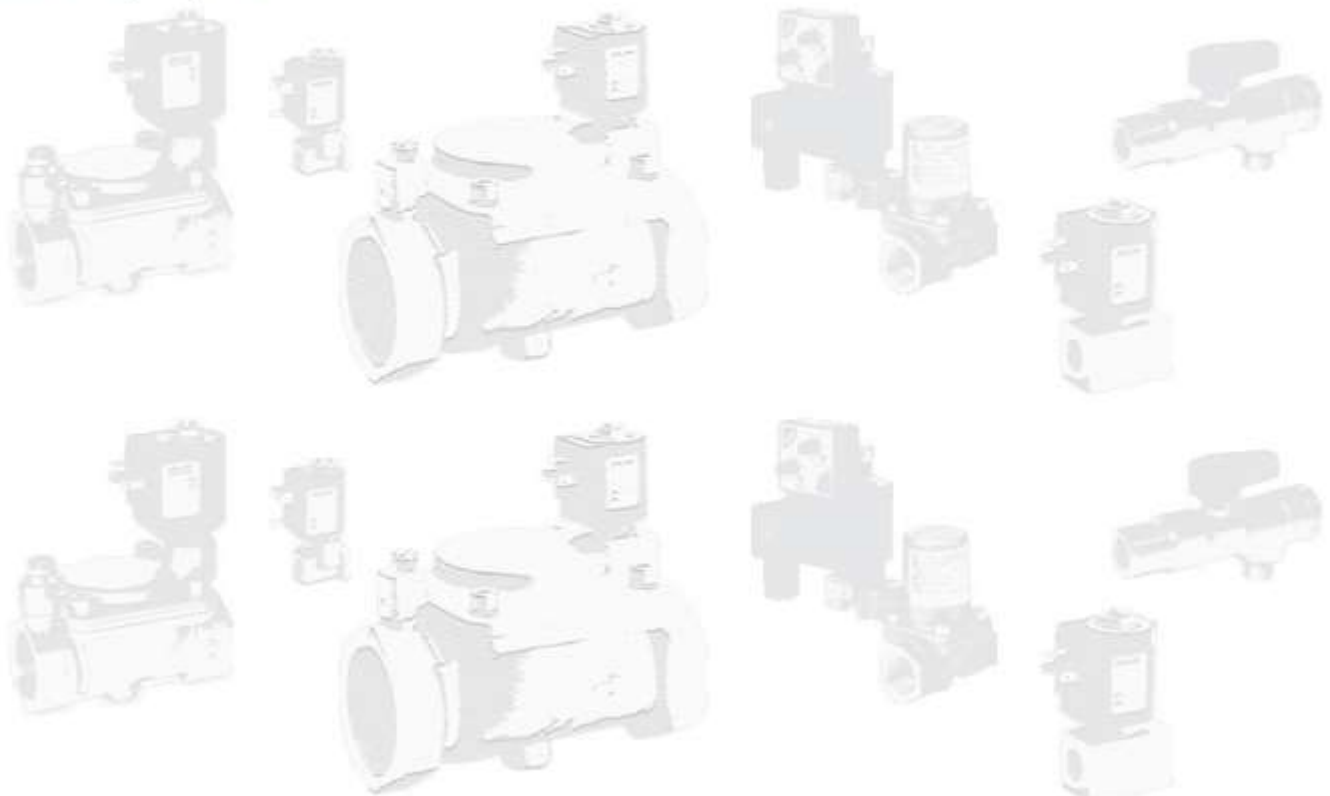
AC 36va (inrush)

DC 14w

OPTIONS

EPDM seal, temperature max. 120°C (e.g. code D249DEF)

* Minimum batch may be required

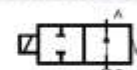


2/2 WAY DIRECT ACTING SOLENOID VALVE, G 1/8"

COMMON FEATURES

Media: water, oil, air
 Media temperature: $-10^{\circ}\text{C} \div +130^{\circ}\text{C}$
 Ambient temperature: $-10^{\circ}\text{C} \div +50^{\circ}\text{C}$
 Body material: brass (CW617N EN 12165)
 Operator material: stainless steel
 Protection class: IP 65 (with connector and gasket)

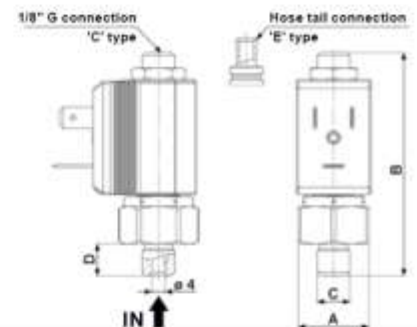
TYPE: RB214



Normally Open



DIMENSIONS & WEIGHTS		RB214
G connection	[ISO 228]	1/8"
A	[mm]	21
B	[mm]	66.5
C	[mm]	1/8"
D	[mm]	9.5
weight	[kg]	0.06



VALVE	nominal \varnothing	flow rate Kvs	OPD			COILS	
			min.	max. AC	max. DC	code	[Volts/Hz]
code	[mm]	[l/min]	[barg]	[barg]	[barg]	code	[Volts/Hz]
RB214CVD	1.7	1.2	0	14	14	2250	24v DC
						2200	24v 50/60Hz
						2400	110v 50Hz - 120v 60Hz
						2600	200v 50Hz - 220v 60Hz
						2700	230v 50Hz - 240v 60Hz

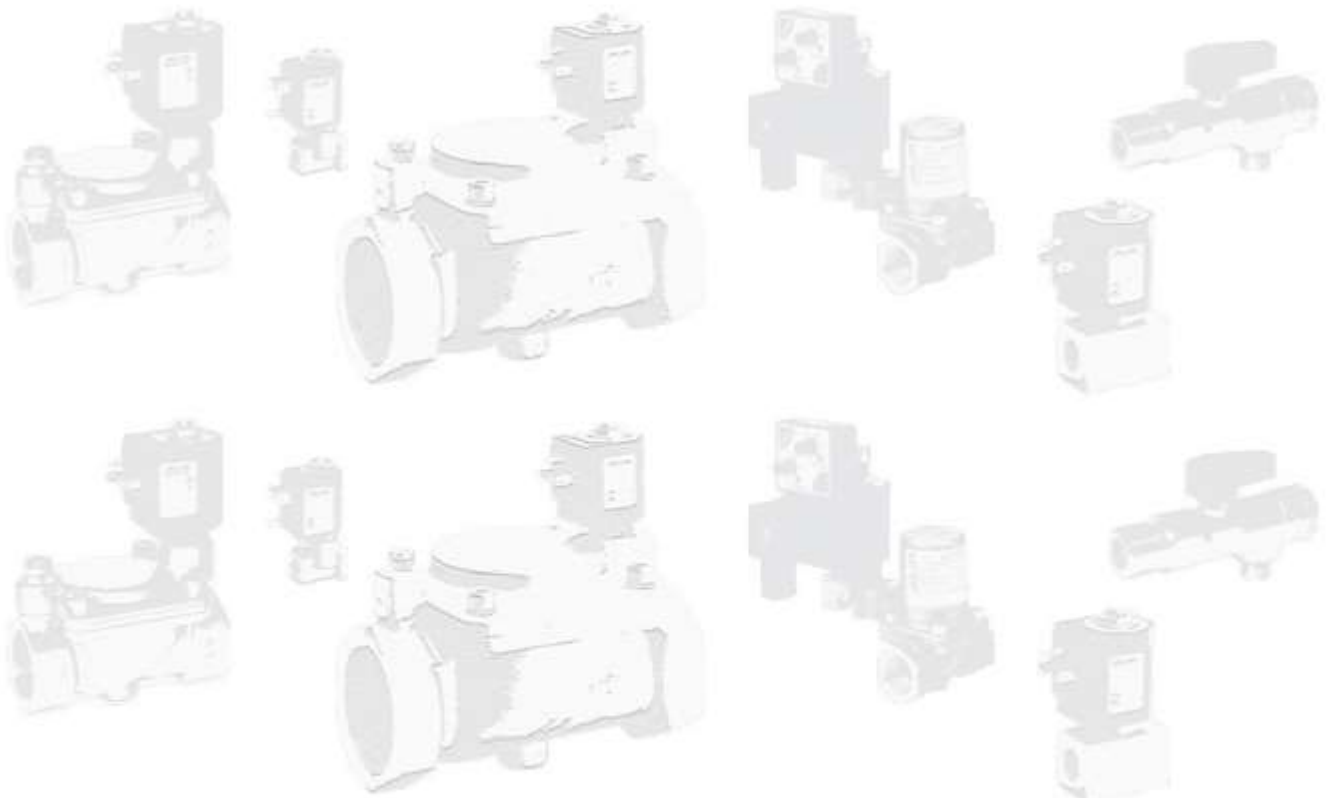
RB214 - FKM seal, NO -

Seal material: foodgrade FKM
 Coil power: AC 10va (holding)
 AC 16va (Inrush)
 DC 7w

OPTIONS

Armature tube with hose tail \varnothing 6 mm (e.g. code RB214EVD)
 EPDM seal, temperature max. 120°C (e.g. code RB214CED)

COMPRESSED AIR



2/2 WAY DIRECT ACTING SOLENOID VALVE, G 1/8"

COMMON FEATURES

Media: water, oil, air

Media temperature: -10°C + +130°C

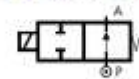
Ambient temperature: -10°C + +50°C

Body material: brass (CW617N EN 12165)

Operator material: stainless steel

Protection class: IP 65 (with connector and gasket)

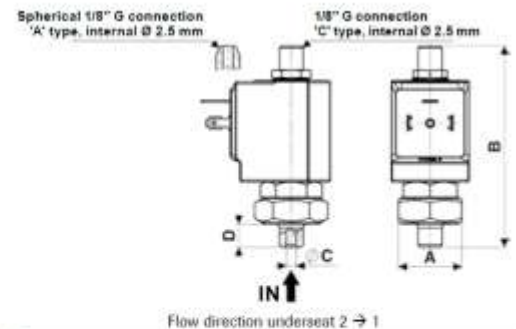
TYPE: RD213



Normally Open



DIMENSIONS & WEIGHTS		RD213
G connection	[ISO 228]	1/8"
A	[mm]	Hex 26
B	[mm]	82.5
C	[mm]	4
D	[mm]	9.5
weight	[kg]	0.1



VALVE	nominal Ø	flow rate Kvs	OPD			COILS	
			min.	max. AC	max. DC	code	[Volts/Hz]
code	[mm]	[l/min]	[barg]	[barg]	[barg]	code	[Volts/Hz]
RD213CVG	2.5	2.4	0	16	16	7250	24v DC
						7200	24v 50/60Hz
						7400	110v 50Hz - 120v 60Hz
						7600	200v 50Hz - 220v 60Hz
						7700	230v 50Hz - 240v 60Hz

RD213 - FKM seal, NO -

Seal material: foodgrade FKM

Coil power: AC 18va (holding)

AC 36va (inrush)

DC 14w

OPTIONS

EPDM seal, temperature max. 120°C (e.g. code RD213CEG)

Armature tube with spherical 1/8" G connection (e.g. code RD213AVG)

COMPRESSED AIR

