

## 2/2 WAY PILOT OPERATED SOLENOID VALVE, G 1/4" ÷ G 1/2"

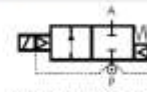
### COMMON FEATURES

Media: water, oil, air  
 Ambient temperature: -10°C + +50°C  
 Body material: brass (CW617N EN 12165)  
 Operator material: stainless steel  
 Protection class: IP 65 (with connector and gasket)

### OPTIONS

EPDM seal, temperature max. 120°C (e.g. code D266DEU)  
 NPT connection on request, minimum batch may be required (e.g. code D264DBUN)

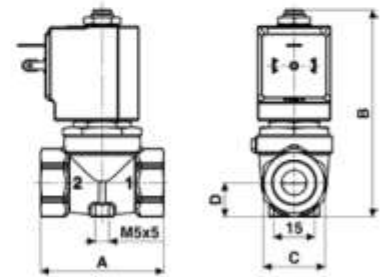
TYPE: D264/265/266



Normally Closed



DIMENSIONS & WEIGHTS		D264	D265	D266
<b>G connection</b>	[ISO 228]	1/4"	3/8"	1/2"
<b>A</b>	[mm]	54	54	54
<b>B</b>	[mm]	89	89	89
<b>C</b>	[mm]	HEX 27	HEX 27	HEX 27
<b>D</b>	[mm]	15	15	15
<b>weight</b>	[kg]	0.45	0.4	0.4



Flow direction overseat 1 → 2

VALVE	nominal Ø	flow rate Kvs	min.	OPD		COILS	
				max. AC	max. DC	code	[Volts/Hz]
code	[mm]	[l/min]	[barg]	[barg]	[barg]	code	[Volts/Hz]
<b>D264DBU</b>	10.5	21	0	16	7	7250	24v DC
<b>D265DBU</b>	10.5	24	0	16	7	7200	24v 50/60Hz
<b>D266DBU</b>	10.5	25	0	16	7	7400	110v 50Hz - 120v 60Hz
						7600	200v 50Hz - 220v 60Hz
						7700	230v 50Hz - 240v 60Hz

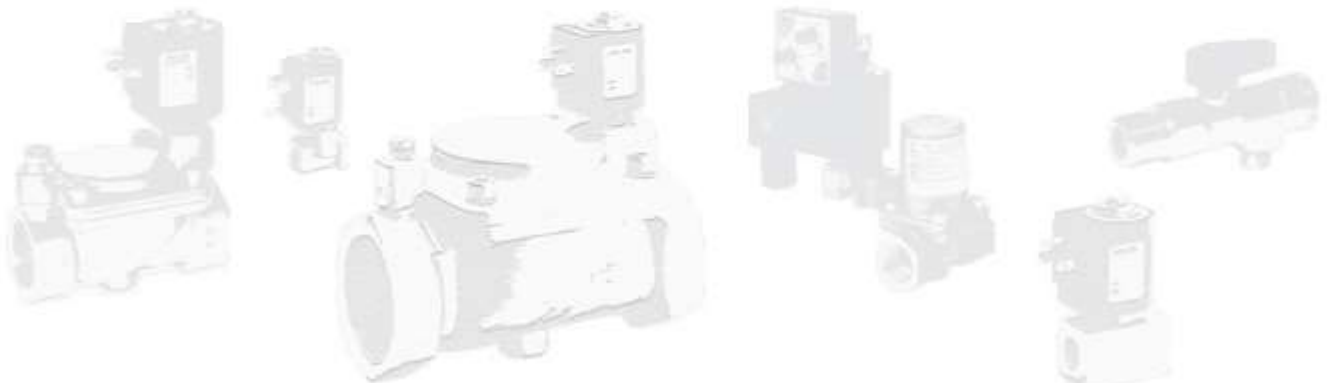
**D264/265/266 - NBR seal, NC -**

Media temperature: -10°C + +90°C  
 Operator seal and diaphragm material: NBR  
 Coil power: AC 18w (holding)  
 AC 36vA (inrush)  
 DC 14w

VALVE	nominal Ø	flow rate Kvs	min.	OPD		COILS	
				max. AC	max. DC	code	[Volts/Hz]
code	[mm]	[l/min]	[barg]	[barg]	[barg]	code	[Volts/Hz]
<b>D264DVU</b>	10.5	21	0	16	7	7250	24v DC
<b>D265DVU</b>	10.5	24	0	16	7	7200	24v 50/60Hz
<b>D266DVU</b>	10.5	25	0	16	7	7400	110v 50Hz - 120v 60Hz
						7600	200v 50Hz - 220v 60Hz
						7700	230v 50Hz - 240v 60Hz

**D264/265/266 - FKM seal, NC -**

Media temperature: -10°C + +130°C  
 Operator seal and diaphragm material: FKM  
 Coil power: AC 18w (holding)  
 AC 36vA (inrush)  
 DC 14w



COMPRESSED AIR

GENERAL PURPOSE

## 2/2 WAY PILOT OPERATED SOLENOID VALVE, G 3/8" ÷ G 3/4"

### COMMON FEATURES

Media: water <sup>⊕</sup>, oil, air <sup>⊖</sup>

Media temperature: -10°C + +130°C

Ambient temperature: -10°C + +50°C

Body material: brass (CW617N EN 12165)

Orifice material: stainless steel (1.4305 EN 10088/AISI 303)

Operator material: stainless steel

Protection class: IP 65 (with connector and gasket)

### NOTES

⊕ When using liquid fluids waterhammer and pressures higher than 20 barg can cause the diaphragm to tear

⊖ Not 100% leak-proof when used with air/gases. Approximate leak rate is 1,5 ml/min at max. OPD

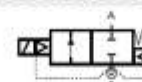
DIMENSIONS & WEIGHTS		D232	D233	D234	RD232	RD233	RD234
<b>G connection</b>	[ISO 228]	3/8"	1/2"	3/4"	3/8"	1/2"	3/4"
<b>A</b>	[mm]	86	86	86	86	86	86
<b>B</b>	[mm]	116.5	116.5	116.5	114	114	114
<b>C</b>	[mm]	50.2	50.2	50.2	50.2	50.2	50.2
<b>D</b>	[mm]	17.5	17.5	17.5	17.5	17.5	17.5
<b>weight</b>	[kg]	1	0.9	0.9	1	0.9	0.9

VALVE	nominal Ø	flow rate Kvs	min.	OPD		COILS	
				max. AC	max. DC	code	[Volts/Hz]
code	[mm]	[l/min]	[barg]	[barg]	[barg]	code	[Volts/Hz]
<b>D232DTW</b>	16.5	42	1	50	50	7250	24v DC
<b>D233DTW</b>	16.5	46	1	50	50	7200	24v 50/60Hz
<b>D234DTW</b>	16.5	48	1	50	50	7400	110v 50Hz - 120v 60Hz
						7600	200v 50Hz - 220v 60Hz
						7700	230v 50Hz - 240v 60Hz

VALVE	nominal Ø	flow rate Kvs	min.	OPD		COILS class 'H' only	
				max. AC	max. DC	code	[Volts/Hz]
code	[mm]	[l/min]	[barg]	[barg]	[barg]	code	[Volts/Hz]
<b>RD232DTW</b>	16.5	42	1	50	50	7251	24v DC
<b>RD233DTW</b>	16.5	46	1	50	50	7201	24v 50/60Hz
<b>RD234DTW</b>	16.5	48	1	50	50	7401	110v 50Hz - 120v 60Hz
						7601	200v 50Hz - 220v 60Hz
						7701	230v 50Hz - 240v 60Hz

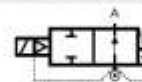
VALVE	nominal Ø	flow rate Kvs	min.	OPD		COILS	
				max. AC	max. DC	code	[Volts/Hz]
code	[mm]	[l/min]	[barg]	[barg]	[barg]	code	[Volts/Hz]
<b>D232DVW</b>	16.5	42	1	25	25	7250	24v DC
<b>D233DVW</b>	16.5	46	1	25	25	7200	24v 50/60Hz
<b>D234DVW</b>	16.5	48	1	25	25	7400	110v 50Hz - 120v 60Hz
						7600	200v 50Hz - 220v 60Hz
						7700	230v 50Hz - 240v 60Hz

### TYPE: D232+D234

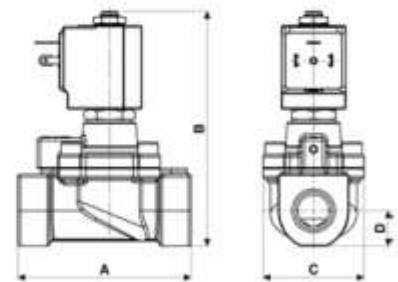


Normally Closed

### TYPE: RD232+RD234



Normally Open



Flow direction overseat 1 → 2

### D232/233/234 - PTFE seal, NC -

Operator seal material: Ruby  
Diaphragm material: FKM  
Main seal material: PTFE  
Coil power: AC 18va (holding)  
AC 36va (inrush)  
DC 14w

### NOTES

Seamless tube as standard

### RD232/233/234 - PTFE seal, NO -

Operator seal material: Ruby  
Diaphragm material: FKM  
Main seal material: PTFE  
Coil power: AC 18va (holding)  
AC 36va (inrush)  
DC 14w

### OPTIONS

FKM seal, temperature max. 130°C (e.g. code RD232DVW).  
Max. OPD: 25 barg AC/DC. min. batch may be required

### D232/233/234 - FKM seal, NC -

Operator seal material: foodgrade FKM  
Diaphragm material: FKM  
Main seal material: FKM  
Coil power: AC 18va (holding)  
AC 36va (inrush)  
DC 14w

HIGH PRESSURE

HIGH PRESSURE

COMPRESSED AIR