

2/2 WAY DIRECT ACTING SOLENOID VALVE, G 1/8" - G 1/4"

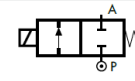
COMMON FEATURES

Body material: stainless steel (1.4305 EN 10088/AISI 303)
 Orifice material: stainless steel (1.4305 EN 10088/AISI 303)
 Operator material: stainless steel
 Protection class: IP 65 (with connector and gasket)

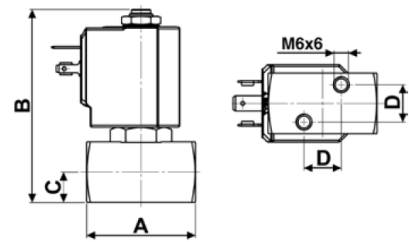
OPTIONS

Available with body thread connection 1/8" (e.g. code D298DVC), performance ratings remain the same as D299DVC.
 Silver shading ring (e.g. code D299DVC/A)

TYPE: D298/299



Normally Closed



Flow direction overseat 1 → 2

DIMENSIONS & WEIGHTS		D298	D299
G connection	[ISO 228]	1/8"	1/4"
A	[mm]	45	45
B	[mm]	80	80
C	[mm]	12.5	12.5
D	[mm]	15.4	15.4
weight	[kg]	0.36	0.36

VALVE	nominal Ø	flow rate Kvs	min.	OPD		COILS	
				max. AC	max. DC	code	[Volts/Hz]
code	[mm]	[l/min]	[barg]	[barg]	[barg]	code	[Volts/Hz]
D299DVC	1.5	1.2	0	24	24	7250	24v DC
D299DVG	2.5	3.3	0	18	18	7200	24v 50/60Hz
D299DVH	3.0	4.5	0	15	10	7400	110v 50Hz - 120v 60Hz
D299DVL	4.0	6.0	0	10	5.5	7600	200v 50Hz - 220v 60Hz
D299DVN	5.0	7.5	0	5	2.5	7700	230v 50Hz - 240v 60Hz

D298/299 - FKM seal, NC -

Media: water, oil, air and aggressive fluids
 Media temperature: -10°C ÷ +130°C
 Ambient temperature: -10°C ÷ +50°C
 Seal material: foodgrade FKM
 Coil power: AC 18vA (holding)
 AC 36vA (inrush)
 DC 14w

OPTIONS

EPDM seal, temperature max. 120°C (e.g. code D298DEH)
 ATEX version see page 37

AGGRESSIVE FLUIDS

VALVE	nominal Ø	flow rate Kvs	min.	OPD		COILS	
				max. AC	max. DC	code	[Volts/Hz]
code	[mm]	[l/min]	[barg]	[barg]	[barg]	code	[Volts/Hz]
D299DKE	2.0	2.3	0	20	20	7250	24v DC
D299DKG	2.5	3.3	0	18	16	7200	24v 50/60Hz
D299DKH	3.0	4.5	0	15	8	7400	110v 50Hz - 120v 60Hz
						7600	200v 50Hz - 220v 60Hz
						7700	230v 50Hz - 240v 60Hz

D298/299 - KALREZ® seal, NC -

Media: chemicals
 Media temperature: -10°C ÷ +130°C
 Ambient temperature: -10°C ÷ +50°C
 Seal material: Kalrez® Spectrum™ 6375
 Coil power: AC 18vA (holding)
 AC 36vA (inrush)
 DC 14w

CHEMICAL INDUSTRY

VALVE	nominal Ø	flow rate Kvs	min.	OPD		COILS	
				max. AC	max. DC	code	[Volts/Hz]
code	[mm]	[l/min]	[barg]	[barg]	[barg]	code	[Volts/Hz]
D299DRB1	1.2	0.7	0	200	110	72Z1	24v DC
D299DRC1	1.5	1.2	0	200	80	72K1	24v 50/60Hz
D299DRE1	2.0	2.3	0	140	30	74K1	110v 50Hz - 120v 60Hz
D299DRG1	2.5	3.3	0	90	23	77K1	230v 50Hz - 240v 60Hz
D299DRH1	3.0	4.5	0	50	14		

D298/299 - RUBY seal, NC -

Media[Ⓢ]: water, oil, air and aggressive fluids
 Media temperature: -10°C ÷ +130°C
 Ambient temperature: -10°C ÷ +50°C
 Seal material: Ruby
 Coil power: AC 25vA (holding)
 AC 50vA (inrush)
 DC 22w

NOTES

Seamless tube as standard
 Ⓢ Not 100% leak-proof when used with air/gases.
 Approximate leak rate is 1.5 ml/min at max. OPD.

HIGH PRESSURE

ATTENTION: When high pressure valves are supplied without a coil, their nameplates display the max. OPD of the valve when equipped with an AC (25vA) and DC (22w) coil (as shown in the table above). When using alternative coil power ratings please ensure to request separately the appropriate nameplate at time of order.