

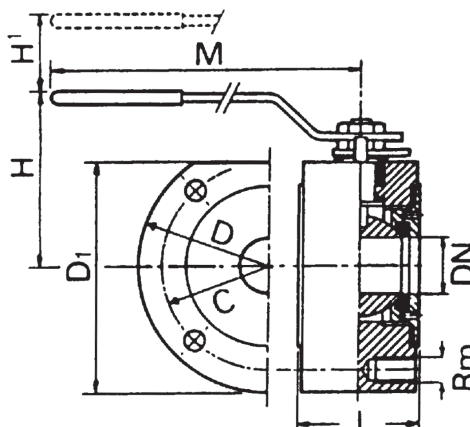
Mod. 2105

● Wafer type. 1 pc full bore ball valve mounting between flanges PN16



- Body: carbon steel A-105.
- Ball, stem and cover: stainless steel AISI 304.
- Seats and seals: PTFE
- Temp. -20°C +180°C.
- Manually operated by handle.

CODE	SIZE	WEIGHT kg
2105 06	1"	2.7
2105 07	1 1/4"	4.6
2105 08	1 1/2"	6.3
2105 09	2"	7.85
2105 10	2 1/2"	13.8
2105 11	3"	20.65
2105 12	4"	31.2



MED	D	D1	C	H	L	M	rM
1"	110	108	85	95	46	185	4xM12
1 1/4"	130	128	100	110	55	280	4xM16
1 1/2"	140	138	110	110	66	280	4xM16
2"	150	148	125	120	72	280	4xM16
2 1/2"	170	168	145	150	98	360	4xM16
3"	190	188	160	160	120	360	8xM16
4"	220	220	180	180	140	480	8xM16

Ball Valves Wafer Type

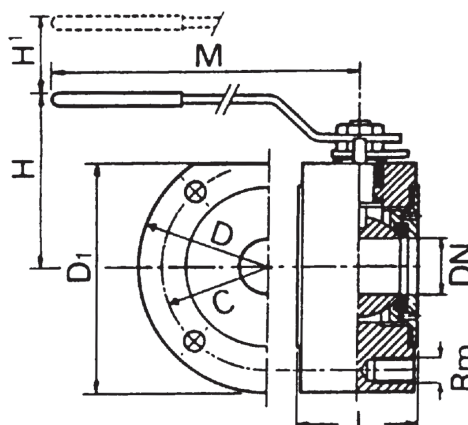
Mod. 2110

● Wafer type. 1 pc full bore ball valve mounting between flanges PN-16



- Body ball and stem: stainless steel AISI 316.
- Seats and seals: PTFE
- Temp. -20°C $+180^{\circ}\text{C}$.
- Manually operated by handle.

CODE	SIZE	WEIGHT kg
2110 04	1/2"	1.4
2110 05	3/4"	2.2
2110 06	1"	2.75
2110 07	1 1/4"	4.64
2110 08	1 1/2"	6.35
2110 09	2"	7.9
2110 10	2 1/2"	13.9
2110 11	3"	20.9
2110 12	4"	31.3



MED	D	D1	C	H	L	M	rM
1/2"	90	88	65	90	32	130	4xM12
3/4"	100	98	75	90	42	180	4xM12
1"	110	108	85	90	45	180	4xM12
1 1/4"	130	128	100	110	54	270	4xM16
1 1/2"	140	138	110	110	65	280	4xM16
2"	150	148	125	125	72	280	4xM16
2 1/2"	170	175	145	150	98	360	4xM16
3"	190	188	160	160	118	360	8xM16
4"	220	210	180	180	140	470	8xM16

Mod. 2115

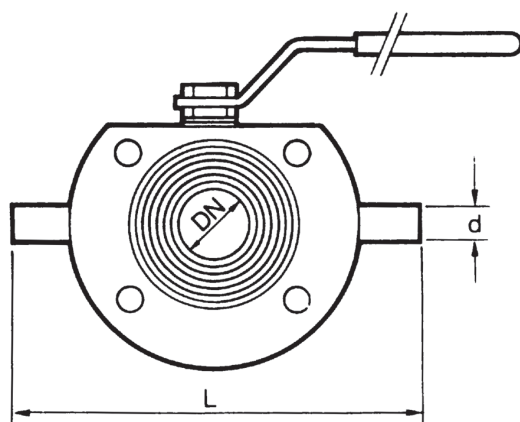


● Wafer type. 1 pc full bore ball valve with heating chamber mounting between flanges PN-16

- Body: forged carbon steel A-105.
- Ball stem and cover: stainless steel AISI 304.
- Seats and seals: PTFE
- Temp. -20°C +180°C.
- Manually operated by handle.

CODE	SIZE	WEIGHT kg
2115 06	1"	3.05
2115 07	1 1/4"	4.73
2115 08	1 1/2"	6.4
2115 09	2"	8.3
2115 10	2 1/2"	13.5
2115 11	3"	20.3
2115 12	4"	32.4

DN	L	d
25	170	3/4"
32	190	3/4"
40	200	3/4"
50	210	3/4"
65	235	3/4"
80	250	3/4"
100	270	3/4"



Ball Valves Wafer Type

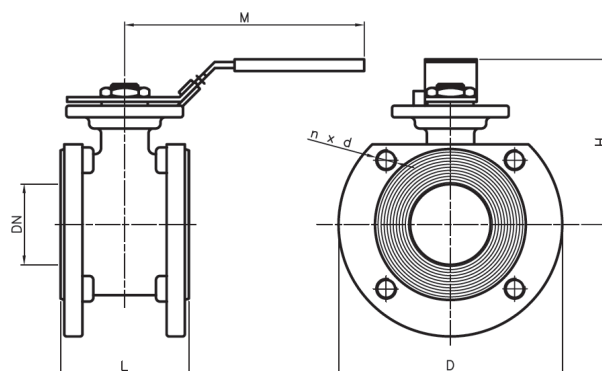
Mod. 2118

● Wafer type. 1 pc full bore ball valve mounting between flanges PN-16



- Const. stainless steel CF8M (316) investment casting.
- Ball and stem: stainless steel 316.
- Seats: PTFE + 15% GF. PN-16.
- Temp. -25°C + 180°C.
- Direct assembling ISO 5211.
- Manually operated by handle with locking system.

CODE	SIZE	WEIGHT kg
2118 04	1/2"	1.25
2118 05	3/4"	1.6
2118 06	1"	2.3
2118 07	1 1/4"	3.55
2118 08	1 1/2"	4.6
2118 09	2"	6.35
2118 10	2 1/2"	9.65
2118 11	3"	13.8
2118 12	4"	18.6



MED	DN	L	M	D	H	nxd
1/2"	15	36	120	95	89	4xM12
3/4"	20	38	120	105	90	4xM12
1"	25	50	160	115	94	4xM12
1 1/4"	32	53	160	140	100	4xM16
1 1/2"	40	65	200	150	105	4xM16
2"	50	78	200	165	125	4xM16
2 1/2"	65	98	255	185	140	4xM16
3"	80	118	255	200	145	8xM16
4"	100	140	300	220	175	8xM16

Mod. 2119



● Wafer type-1 Pc full bore ball valve with heating chamber. Mounting between flanges PN-16

- Const. Stainless steel CF8M (316) Investment casting.
- Ball and stem: stainless steel 316.
- Seats: PTFE + 15% GF. PN – 16.
- Temp. -25 °C + 180 °C.
- Direct assembling ISO 5211.
- Manually operated by handle with locking system.

CODE	SIZE	WEIGHT kg
2119 04	1/2"	1.34
2119 05	3/4"	1.71
2119 06	1"	2.45
2119 07	1 1/4"	3.8
2119 08	1 1/2"	4.95
2119 09	2"	6.8
2119 10	2 1/2"	10.4
2119 11	3"	14.8
2119 12	4"	19.9

MED	DN	L	d
1/2"	15	150	1/2" G
3/4"	20	160	1/2" G
1"	25	170	1/2" G
1 1/4"	32	190	1/2" G
1 1/2"	40	200	1/2" G
2"	50	210	1/2" G
2 1/2"	65	235	1/2" G
3"	80	250	1/2" G
4"	100	270	1/2" G

