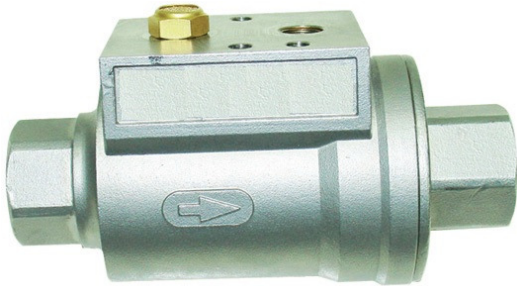


Mod. 5062-5062N

Pneumatic Shuttle Valve



Also available with NPT thread (5062N). Stainless steel material AISI 304. Gas thread ends.

Seat EPDM material. Namur pneumatic connection.

Maximum working pressure 16 PN.

CODE	SIZE	WEIGHT kg	MED	A	B	D	L	SW
5062 03	3/8"	0.8	3/8"	54	31	46	98	22
5062 04	1/2"	1	1/2"	59	33	52	112	27
5062 05	3/4"	1.5	3/4"	70	38	64	135	32
5062 06	1"	1.92	1"	76	41	69	143	41
5062 07	1 1/4"	3.06	1 1/4"	92	49	86	165	50
5062 08	1 1/2"	3.76	1 1/2"	102	54	96	180	56
5062 09	2"	5.71	2"	114	60	108	207	70

