

Pressure Gauges

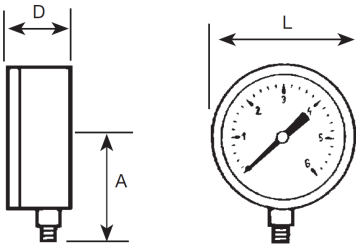
Mod. 3819



● Pressure Gauge Ø53, Red Index, Bottom Connection

- ABS case.
- Brass bourdon pipe and connector UNE-EN 12165.
- 1/4" male gas threaded (BSP).
- Scale available from 0-2.5-4-6-10-16-25 bar.
- Bottom connection (radial).
- Precision class 2.5.

A	L	D
46	53	27



CODE	bar	psi	WEIGHT g
3819 002	0-2.5	0-40	67
3819 004	0-4	0-60	67
3819 006	0-6	0-90	67
3819 010	0-10	0-150	67
3819 016	0-16	0-240	67
3819 025	0-25	0-400	67

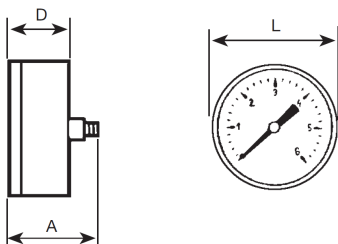
Mod. 3818



● Pressure gauge Ø53, red index, back connection

- ABS case.
- Brass bourdon pipe and connector UNE-EN 12165.
- 1/4" male gas threaded (BSP).
- Scale available from 0-2.5-4-6-10-16-25 bar.
- Back connection.
- Precision class 2.5.

A	L	D
48	53	27



CODE	bar	psi	WEIGHT g
3818 002	0-2.5	0-40	67
3818 004	0-4	0-60	67
3818 006	0-6	0-90	67
3818 010	0-10	0-150	67
3818 016	0-16	0-240	67
3818 025	0-25	0-400	67

Pressure Gauges

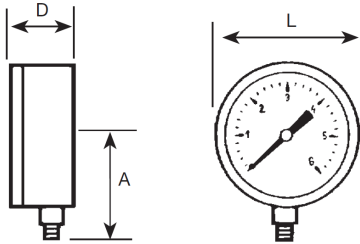
Mod. 3820



● Pressure gauge Ø53, bottom connection, BSP thread

- ABS case.
- Brass bourdon pipe and connector UNE-EN 12165.
- 1/4" male gas threaded (BSP).
- Scale available from 0-2.5-4-6-10-16-25 bar.
- Bottom connection (radial).
- Precision class 2.5.

A	L	D
47	53	27



CODE	bar	psi	WEIGHT g
3820 002	0-2.5	0-40	68
3820 004	0-4	0-60	68
3820 006	0-6	0-90	68
3820 010	0-10	0-150	68
3820 016	0-16	0-240	68
3820 025	0-25	0-400	68

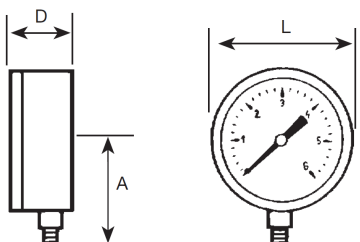
Mod. 3820N



● Pressure gauge Ø53, bottom connection, NPT thread

- ABS case.
- Brass bourdon pipe and connector UNE-EN 12165.
- 1/4" male gas threaded (NPT).
- Scale available from 0-2.5-4-6-10-16-25 bar.
- Bottom connection (radial).
- Precision class 2.5.

A	L	D
47	53	27



CODE	bar	psi	WEIGHT g
3820N 002	0-2.5	0-40	68
3820N 004	0-4	0-60	68
3820N 006	0-6	0-90	68
3820N 010	0-10	0-150	68
3820N 016	0-16	0-240	68
3820N 025	0-25	0-400	68

Pressure Gauges

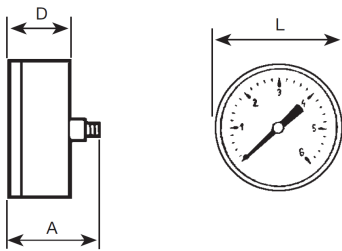
Mod. 3821



● Pressure gauge Ø53, back connection, BSP thread

- ABS case.
- Brass bourdon pipe and connector UNE-EN 12165.
- 1/4" male gas threaded (BSP).
- Scale available from 0-2,5-4-6-10-6-25 bar.
- Back connection.
- Precision class 2.5.

A	L	D
48	53	27



CODE	bar	psi	WEIGHT g
3821 002	0-2.5	0-40	72
3821 004	0-4	0-60	72
3821 006	0-6	0-90	72
3821 010	0-10	0-150	72
3821 016	0-16	0-240	72
3821 025	0-25	0-400	72

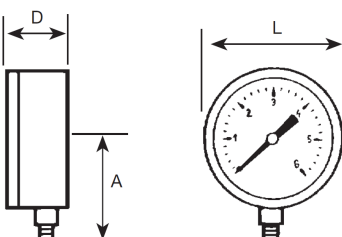
Mod. 3825



● Pressure gauge Ø63, red index, bottom connection

- ABS case.
- Brass bourdon pipe and connector UNE-EN 12165.
- 1/4" male gas threaded (BSP).
- Scale available from 0-2.5-4-6-10-16-25 bar.
- Bottom connection (radial).
- Precision class 2.5.

A	L	D
50	63	28



CODE	bar	psi	WEIGHT g
3825 002	0-2.5	0-40	75
3825 004	0-4	0-60	75
3825 006	0-6	0-90	75
3825 010	0-10	0-150	75
3825 016	0-16	0-240	75
3825 025	0-25	0-400	75

Pressure Gauges



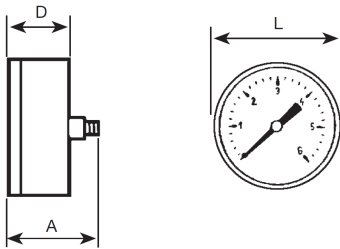
Mod. 3826



● Pressure gauge Ø63, red index, back connection

- ABS case.
- Brass bourdon pipe and connector UNE-EN 12165.
- 1/4" male gas threaded (BSP).
- Scale available from 0-2.5-4-6-10-16-25 bar.
- Back connection (radial).
- Precision class 2.5.

A	L	D
49	63	29



CODE	bar	psi	WEIGHT g
3826 002	0-2.5	0-40	75
3826 004	0-4	0-60	75
3826 006	0-6	0-90	75
3826 010	0-10	0-150	75
3826 016	0-16	0-240	75
3826 025	0-25	0-400	75

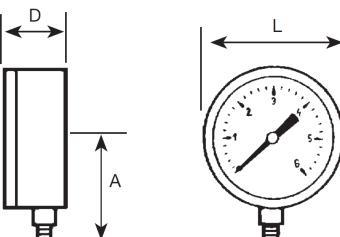
Mod. 3822



● Pressure gauge Ø63 with glycerine, bottom connection, BSP thread

- Stainless steel AISI 304 case.
- Brass bourdon pipe and connector UNE-EN 12165.
- 1/4" male gas threaded (BSP).
- Scale available from 0-2,5- 4-6-10-16-25-60-100 bar.
- Bottom connection (radial). Precision class 2.5.

A	L	D
55	63	30



CODE	bar	psi	WEIGHT g
3822 002	0-2.5	0-40	175
3822 004	0-4	0-60	175
3822 006	0-6	0-90	175
3822 010	0-10	0-150	175
3822 016	0-16	0-240	175
3822 025	0-25	0-400	175
3822 060	0-60	0-900	175
3822 100	0-100	0-1500	175

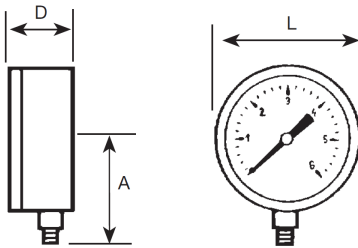
Pressure Gauges



Mod. 3822N



A	L	D
55	63	30



● Pressure gauge Ø63 with glycerine, bottom connection, NPT thread

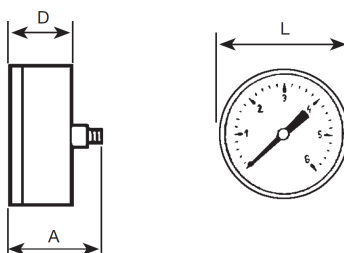
- Stainless steel AISI 304 case.
- Brass bourdon pipe and connector UNE-EN 12165.
- 1/4" male gas threaded (NPT).
- Scale available from 0-2.5- 4-6-10-16-25-60-100 bar
- Bottom connection (radial).
- Precision class 2.5.

CODE	bar	psi	WEIGHT g
3822N 002	0-2.5	0-40	175
3822N004	0-4	0-60	175
3822N 006	0-6	0-90	175
3822N 010	0-10	0-150	175
3822N 016	0-16	0-240	175
3822N 025	0-25	0-400	175
3822N 060	0-60	0-900	175
3822N 100	0-100	0-1500	175

Mod. 3829



A	L	D
48	63	27



● Pressure gauge Ø63 with glycerine, back connection, BSP thread

- Stainless steel AISI 304 case.
- Brass bourdon pipe and connector UNE-EN 12165.
- 1/4" male gas threaded (BSP).
- Scale available from 0-2.5- 4-6-10-16-25-60-100 bar.
- Back connection.
- Precision class 2.5.

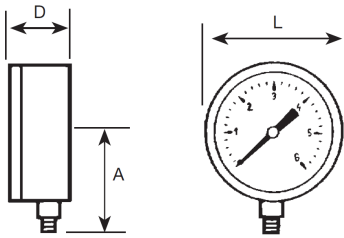
CODE	bar	psi	WEIGHT g
3829 002	0-2.5	0-40	175
3829 004	0-4	0-60	175
3829 006	0-6	0-90	175
3829 010	0-10	0-150	175
3829 016	0-16	0-240	175
3829 025	0-25	0-400	175
3829 060	0-60	0-900	175
3829 100	0-100	0-1500	175

Pressure Gauges

Mod. 3814



A	L	D
56	63	30



● Pressure gauge Ø63 with glycerine, bottom connection, BSP thread

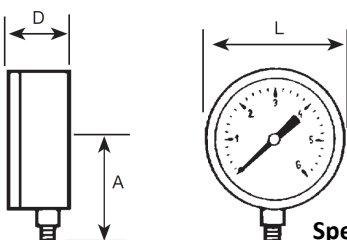
- Stainless steel AISI 304 case - bourdon pipe and connector.
- 1/4" male gas threaded (BSP).
- Scale available from 0-2.5-4 -6-10-16-25- 40-60-100 bar.
- Bottom connection (radial). Precision class 2.5.

CODE	bar	psi	WEIGHT g
3814 002	0-2.5	0-40	175
3814 004	0-4	0-60	175
3814 006	0-6	0-90	175
3814 010	0-10	0-150	175
3814 016	0-16	0-240	175
3814 025	0-25	0-400	175
3814 040	0-45	0-600	175
3814 060	0-60	0-900	175
3814 100	0-100	0-1500	175

Mod. 3714



A	L	D
51	63	30



● Pressure gauge Ø63 mm, bottom connection, NPT thread

- Carbon steel case.
- Brass bourdon pipe and connector UNE-EN 12165.
- 1/4" male NPT threaded.
- Bottom connection (radial).
- Precision class 2.5. Kg/cm², psi scale.

CODE	bar	psi	WEIGHT g
3714 004	0-4	0-60	115
3714 007	0-7	0-100	115
3714 010	0-10	0-150	115
3714 014	0-14	0-200	115
3714 017	0-17	0-250	115
3714 021	0-21	0-300	115
3714 028	0-28	0-400	115
3714 016	0-16	-	115
3714 315	0-315	-	115

Special for Oxygen

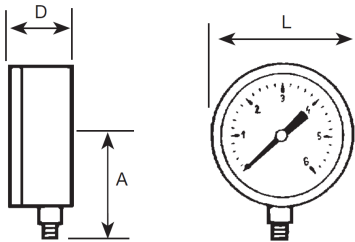
Special for Acetylene (not oil)

Pressure Gauges

Mod. 3827



A	L	D
70	80	32



● Pressure gauge Ø80 mm, red index, bottom connection, BSP thread

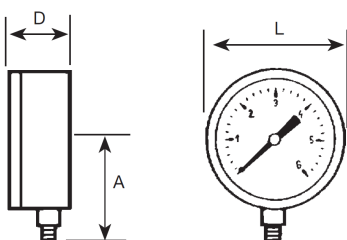
- ABS Case, red index, double scale.
- Bourdon pipe and connector 3/8" male gas threaded (BSP).
- Scale available from 0-2.5-4-6-10-16-25- 40 bar.
- Bottom connection (radial).
- Precision class 2.5

CODE	bar	psi	WEIGHT g
3827 002	0-2.5	0-40	148
3827 004	0-4	0-60	148
3827 006	0-6	0-90	148
3827 010	0-10	0-150	148
3827 016	0-16	0-240	148
3827 025	0-25	0-400	148
3827 040	0-40	0-600	148

Mod. 3824



A	L	D
85	100	36



● Pressure gauge Ø100 with glycerine, bottom connection, BSP thread

- Stainless steel AISI 304 case, bourdon pipe and connector.
- 1/2" male gas threaded (BSP).
- Scale available from 0-2,5-4-6-10-16-25-40- 60-100 bar.
- Bottom connection (radial).
- Precision class 1.6.

CODE	bar	psi	WEIGHT g
3824 002	0-2.5	0-40	520
3824 004	0-4	0-60	520
3824 006	0-6	0-90	520
3824 010	0-10	0-150	520
3824 016	0-16	0-240	520
3824 025	0-25	0-400	520
3824 040	0-40	0-600	520
3824 060	0-60	0-900	520
3824 100	0-100	0-1500	520

Pressure Gauges

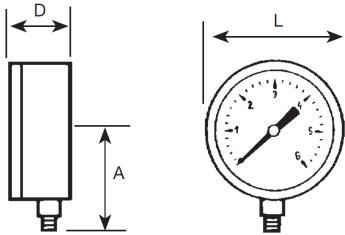
Mod. 3824N

● Pressure gauge Ø100 with glycerine, bottom connection, NPT thread



- Stainless steel AISI 304 case, Bourdon pipe and connector.
- 1/2" male threaded (NPT).
- Scale available from 0-4-6 -10-16-25-40-60-100 bar.
- Bottom connection (radial).
- Precision class 1.6.

A	L	D
85	100	36



CODE	bar	psi	WEIGHT g
3824N 002	0-2.5	0-40	520
3824N 004	0-4	0-60	520
3824N 006	0-6	0-90	520
3824N 010	0-10	0-150	520
3824N 016	0-16	0-240	520
3824N 025	0-25	0-400	520
3824N 040	0-40	0-600	520
3824N 060	0-60	0-900	520
3824N 100	0-100	0-1500	520