

### X4A 2/2 way Normally Closed Pilot Operated ATEX Solenoid Valve

Y series coil

X4A 1/4" -> 1" 2/2 NC



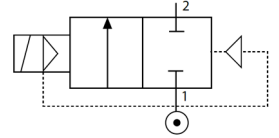
#### Construction:

- Body: Stainless Steel AISI 316L
- Armature Tube: Stainless Steel
- Seals: NBR -10°C, NBR -40°C, EPDM, FKM, PTFE
- Fixed and Mobile Core: Stainless Steel AISI 430FR
- Springs: Stainless Steel
- Shading Ring: Copper



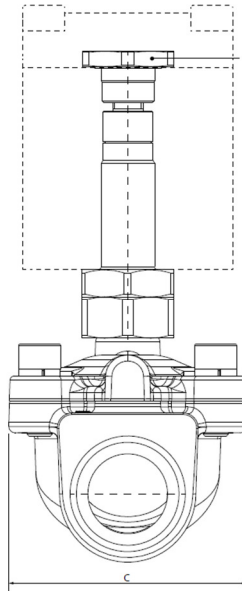
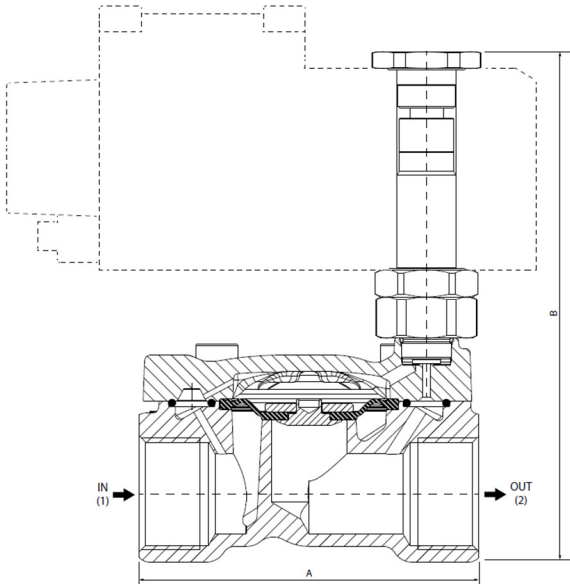
Valve: ATEX II 2G/D Ex h certified

Coil: ATEX II 2G/D Ex d / Ex tb certified



Size	A	B	C
1/4"	55.5	103.5	35.2
3/8"	65.3	111.1	46.4
1/2"	65.3	111.1	46.4
3/4"	1	121.9	56.7
1"	5	128	65

Max: 5 Nm



Code	Seal	Port Size	Orifice	Viscosity	Kv	Differential Pressure (OPD)			Power		Coils	
						Bar			DC	AC	Size	Series
						Min	Max DC	Max AC	W	VA	mm	
Example: 04A 03 1 10 <u>N</u> H		ISO228	mm	cSt	m <sup>3</sup> /h							
X4A 03 1 10 _ H	N = NBR -10°C +90°C	1/4"	10	25	1.88	0.15	20	20	8	12	50	YA 12V DC
X4A 04 1 14 _ H		3/8"	14	25	3.32	0.15	20	20	8	12	50	YB 24V AC/DC
X4A 05 1 14 _ H	V = FKM -10°C +140°C	1/2"	14	25	3.53	0.15	20	20	8	12	50	Y2 110V/120V AC/DC
X4A 07 1 18 _ H		3/4"	18	25	5.56	0.15	20	20	8	12	50	Y3 220V/240V AC DC
X4A 09 1 25 _ H	E = EPDM -10°C +140°C	1"	25	25	10.97	0.15	20	20	8	12	50	

Steam applications: EPDM Max Pressure = 2.5 bar

## Y Series Coil



### Information:

Bore Size: 14mm

ED: 100%

Aluminium Case (Stainless Steel on request)

Integrated terminal block

Horizontal cable entry

Surge suppressor

Double Gasket

Installation in potentially explosive atmospheres and extreme environmental conditions.

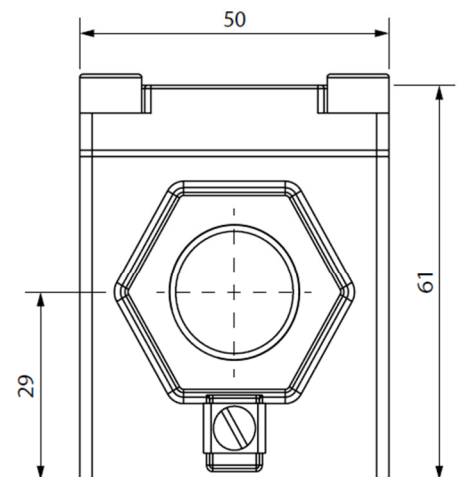
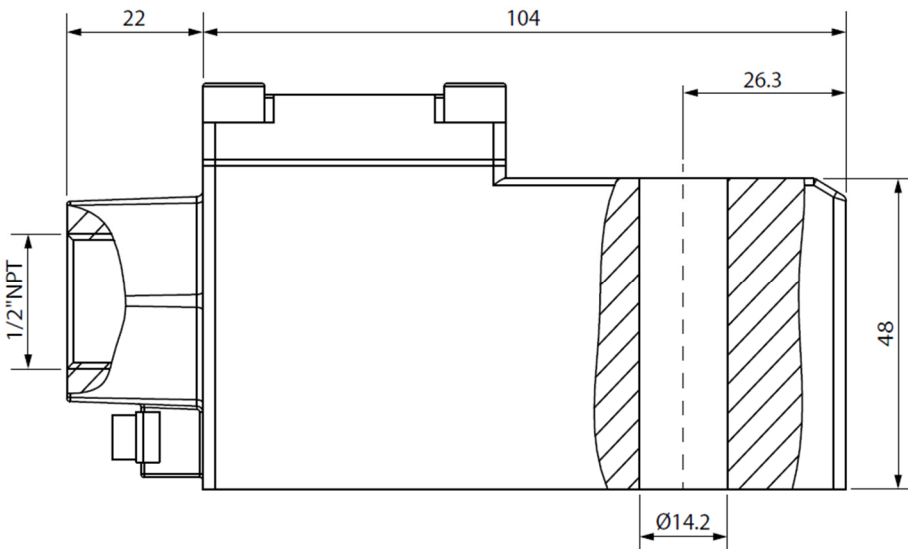
ATEX II 2GD

Ex d IIC T6 / t5 / T4 Gb IP66

Ex tb IIIC T85°C / T100°C / T135°C Db IP66

CESI 03 ATEX 344/02

Tamb -40°C ÷ +35°C(T6) / +50°C (T5) / +60°C(T4)



Reference	Code	Voltage	Function	Voltage Tolerance
YA	SOLY0012C5000	12V	8 W	±10%
YB	SOLY0024C5000	24V AC/DC	8 W	±10%
Y2	SOLY0110C5000	110V/120V AC/DC	8 W	±10%
Y3	SOLY0220C5000	220V/240 AC/DC	8 W	±10%