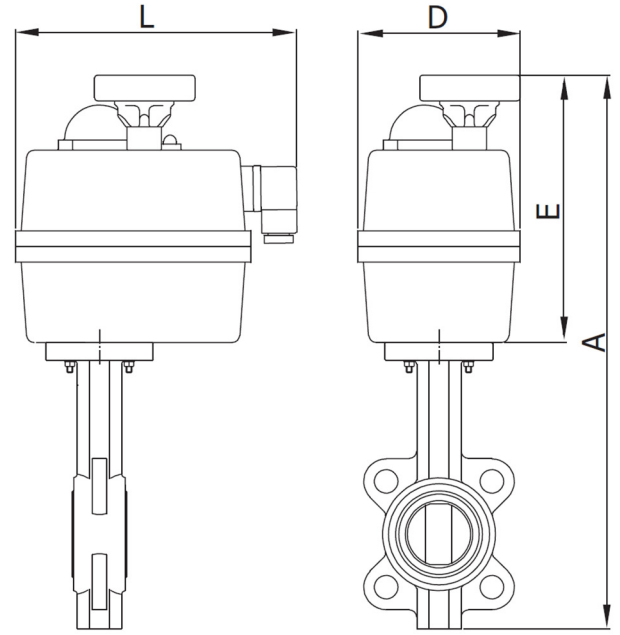


- J4C range wafer butterfly valves are available in sizes from 2" to 8".
- The VF electric actuator has a weatherproof IP67 enclosure, electronic torque limiter, a useful RGB display system and conversion kits to enable modulating function or change the standard on/off function.
- VF electric actuators are available for voltages from 12V through to 240V.

Actuator	VF-1S			VF-15S		VF-2S	VF-2+S
DN	2" 50MM	2 1/2" 65MM	3" 80MM	4" 100MM	5" 125MM	6" 150MM	8" 200MM
A	435	449	464	501	538	614	684
E	196	196	196	196	196	254	254
L	177	177	177	177	177	215	215
D	110	110	100	110	110	214	214
Weight (Kg)	6,300	6,700	5,650	8,500	11,200	12,250	21,000
Operating Time	13	13	13	29	29	34	58



Actuator Specification

Enclosure	Weatherproof IP67
Power	24V to 240V AC / 24V to 110V DC
Limit Switches	4X SPDT microswitches (2 motor stop and 2 confirmations)
Anti-Condensation Heater	3.5W
Connector	Large = EN175301-803 Form A / Small = DIN 43650/C
Operating Temperature	-20°C to +70°C
Manual Override	Declutching Handwheel
Cover, Body, Cams Material	Polyamide A6
Options:	Battery Failsafe Digital Positioning System (4-20mA, 0-10V) 180° and 270° operation 12V AC/DC power supply

Valve Specification

Body	Epoxy Coated Cast Iron
Seat and Seal	NBR / EPDM
Disc	1.4408 Stainless Steel
Stem and Pivot	AISI 416 Stainless Steel
Plug, Washer, Stop Ring and Plate	Zinc Plated Carbon Steel
Bush	PTFE and Graphite
Pressure Rating	16 Bar
Temperature	-20°C to +110°C
Flange	EN-GJL-200 (GG-20) allows for installation between ANSI 150, EN 1092 10/16

LED Status Indication

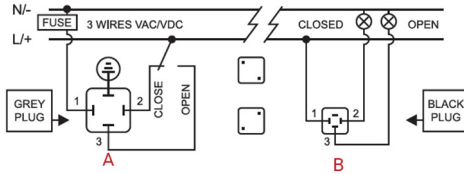
No power	LED off	
Actuator Fully Open	Red Led Solid	
Actuator Fully Closed	Green Led Solid	
Moving Open > Closed	Red and Orange Flash	
Moving Closed > Open	Green and Orange Flash	
Torque lim. Engaged Open > Closed	Red Blinking	
Torque lim. Engaged Closed > Open	Green Blinking	
Manual Mode Engaged	Orange Blinking	
Battery Failsafe Activated Normally Open	Red Intermittent	
Battery Failsafe Activated Normally Closed	Green Intermittent	
Battery Failsafe Needs Charging	Orange Intermittent	
Digital Positioning System Stationary	Blue Solid	
Digital Positioning System Opening	Blue and Green Flash	
Digital Positioning System Closing	Blue and Red Flash	



Standard Electrical Connections

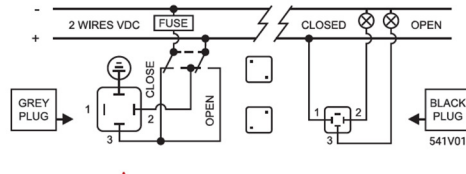
On - Off V AC

VF-0S - VF-15S

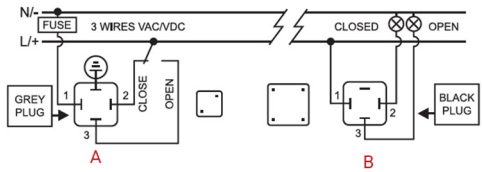


On - Off V DC

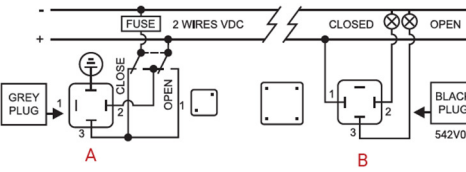
VF-0S - VF-15S



VF-2S - VF-2+S



VF-2S - VF-2+S



A = Power supply plug (Grey plug)

Neutral PIN 1 + Phase PIN 2 = Close Actuator

Neutral PIN 1 + Phase PIN 3 = Open Actuator

Earth/ground connection - Flat PIN

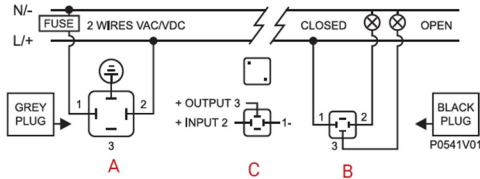
B = Volt free contact plug (Black Plug)

Common PIN 1 + PIN 2 = Close confirmation of position

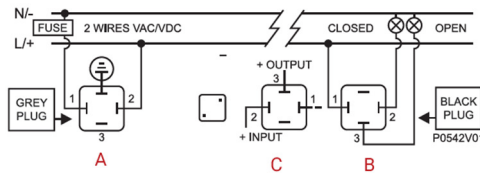
Common PIN 1 + PIN 3 = Close confirmation of position

Positioner V AC / DC

VF-0S - VF-15S



VF-2S - VF-2+S



A = Power supply plug (Grey plug)

Neutral/Negative PIN 1 + Phase/positive PIN 2 - Power Supply

Earth/ground connection - Flat PIN

B = Volt free contact plug (Black Plug)

Common PIN 1 + PIN 2 = Close confirmation of position

Common PIN 1 + PIN 3 = Close confirmation of position

C = Input/output signal (Black plug)

Negative PIN 1 + positive PIN 2 = Input signal

Negative PIN 1 + positive PIN 3 = Output signal

C = Instrumentation signal **MAX 10V**

Digital Positioner System: Earth should not be connected to avoid self adjustment of the actuator position