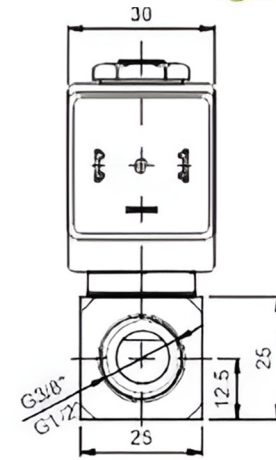
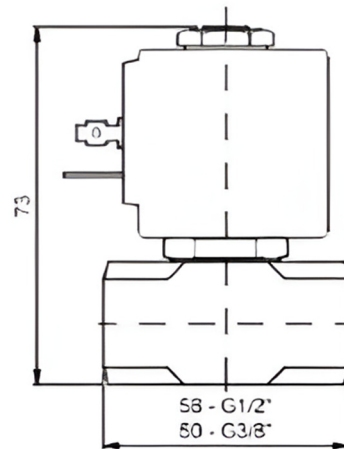
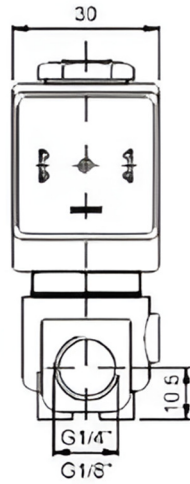
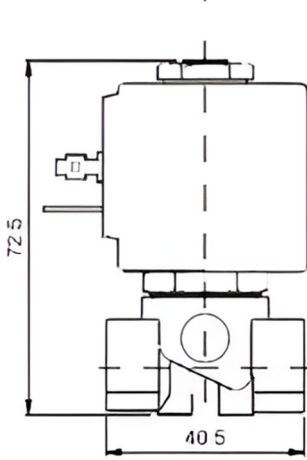
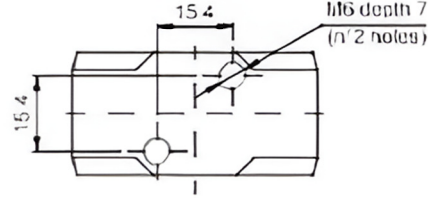
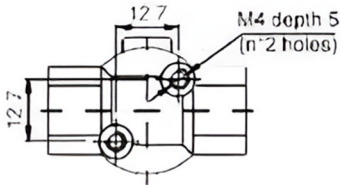
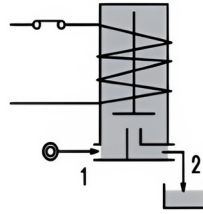
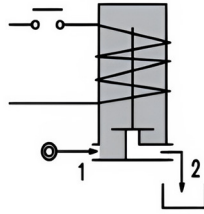
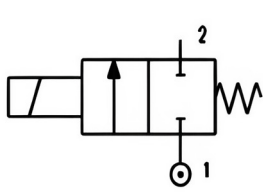


R2AC 2/2 way Normally Open Direct Acting Solenoid Valve



Code	Connection G ISO228	Orifice mm	Flow Rate Kvs m ³ /h	Differential Pressure (bar)			Coil		Seal	Temp Range °C		
				min	max. AC	Max.DC	series	width mm				
R2ACAAG#15/// Coil	1/8"	1.5	0.07	0	24	24	3000	30	NBR=B	-10 +90		
R2ACAAG#20/// Coil		2.0	0.1	0	18	18						
R2ACAAG#25/// Coil		2.5	0.15	0	12	12						
R2ACAAG#30/// Coil		3.0	0.25	0	9	9						
R2ACAAG#35/// Coil		3.5	0.32	0	7	7						
R2ACABG#15/// Coil	1/4"	1.5	0.07	0	24	24			3000	30	EPDM=E	-10 +160
R2ACABG#20/// Coil		2.0	0.1	0	18	18						
R2ACABG#25/// Coil		2.5	0.15	0	12	12						
R2ACABG#30/// Coil		3.0	0.25	0	9	9						
R2ACABG#35/// Coil		3.5	0.32	0	7	7						
R2ACABG#45/// Coil		4.5	0.41	0	5	5						
R2ACABG#52/// Coil		5.2	0.47	0	4	4						
											FPM=V	

Code	Connection G ISO228	Orifice mm	Flow Rate Kvs m ³ /h	Differential Pressure (bar)			Coil		Seal	Temp Range °C
				min	max. AC	Max.DC	series	width mm		
R2ACACG#30/// Coil	3/8"	3	0.25	0	9	9	3000	30	NBR=B	-10 +90
R2ACACG#35/// Coil		3.5	0.32	0	7	7				
R2ACACG#45/// Coil		4.5	0.41	0	5	5				
R2ACACG#52/// Coil		5.2	0.47	0	4	4				
R2ACADG#30/// Coil	1/2"	3	0.25	0	9	9			EPDM=E	-10 +160
R2ACADG#35/// Coil		3.5	0.32	0	7	7				
R2ACADG#45/// Coil		4.5	0.41	0	5	5				
R2ACADG#52/// Coil		5.2	0.47	0	4	4				

Notes: -For Industrial Oxygen use, FKM sealing to be used, Max pressure is limited to 25 bar

-The maximum allowable pressure PS for steam: 10 bar with PTFE seals, 2.5 bar with EPDM

Coil	Coil P/N	Voltage	Nominal Power			Electrical Connection	Connectors
			AC VA Inrush	AC VA Holding	DC Watt		
Series 3000 Width 30mm	3001	24V DC	-	-	10	DIN43650A	A1B09-1-2A
	300B	24V AC	15	12	-		
	300d	110V AC	15	12	-		
	300E	230V AC	15	12	-		

Description:

- Solenoid valve 2/2 direct acting
- Brass body CW617N.
- Switch-On time 25ms.
- Switch-Off time 10ms.

Construction:

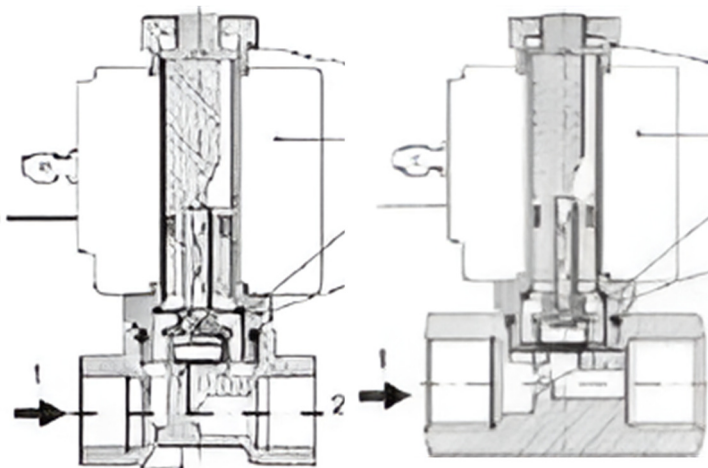
- Body: Brass CW617N
- Armature tube: Stainless steel AISI 303
- Plunger and core: Stainless steel 430FR
- Springs: Stainless steel AISI 302
- Seal material: NBR - FPM – EPDM - PTFE

Spare parts:

- Coil fixing nut
- Coil
- Mobile plunger assembly
- Armature tube kit

Features:

- Maximum allowable pressure: 45bar*
- Maximum fluid viscosity: 27cSt (mm²/s)
- Ambient temperature:
with class F coil -10°C +55°C
with class H coil -10°C +80°C
- Above 80°C please consult our technical department for support.
- Universal mounting position



Options:

- Electroless nickel plating
- Others on request