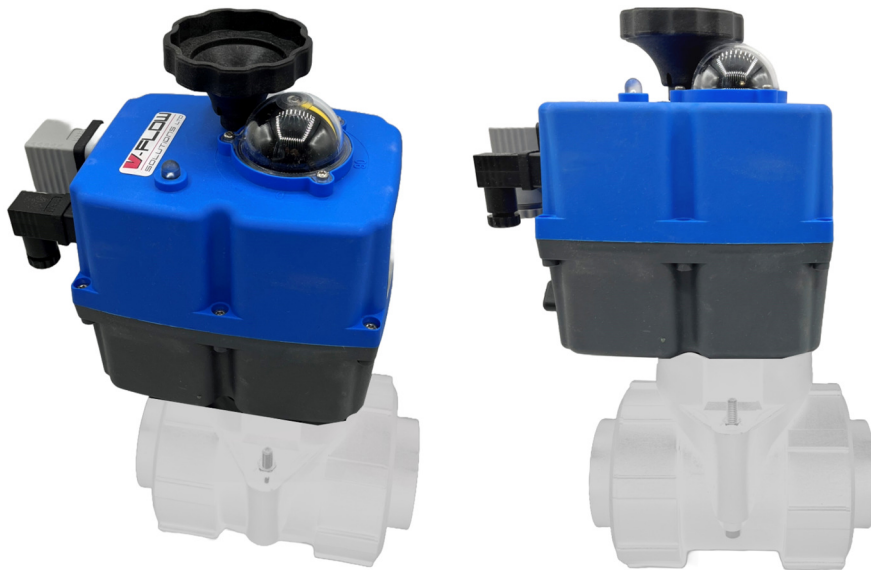


VFE2027 - Electrically Actuated 2 Way PVDF Double Union Ball Valve



Valve Features and Specification

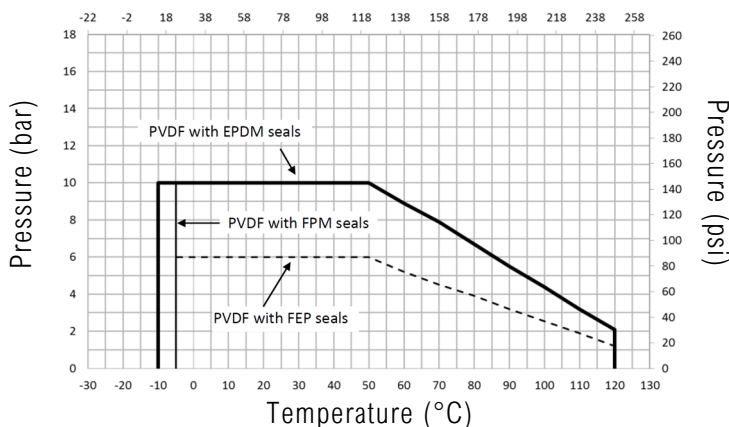
Body	PVDF
Seat	PTFE
Seal Options	EPDM Food Grade Acetic EPDM FPM/FKM FEP+FPM+FFPM FEP+FFPM
Connection Options	BSP Threaded Socket Plain Socket
Bore	Full Bore
Operating Temperature:	EPDM = -10°C to +100°C FPM = -5°C to 100°C FEP = -5°C to 100°C

Actuator Specification

Enclosure	Weatherproof IP67
Power	24V to 240V AC / 24V to 110V DC
Limit Switches	4X SPDT microswitches (2 motor stop and 2 confirmations)
Anti-Condensation Heater	3.5W
Connector	<i>Large</i> = EN175301-803 Form A / <i>Small</i> = DIN 43650/C
Operating Temperature	-20°C to +70°C
Operating Time (90°) +/-10%	VF-OS = 10 seconds
Manual Override	Declutching Handwheel
Cover, Body, Cams Material	Polyamide A6
Options:	Battery Failsafe Digital Positioning System (4-20mA, 0-10V) 180° and 270° operation 12V AC/DC power supply

Pressure / Temperature:

Temperature (°F)

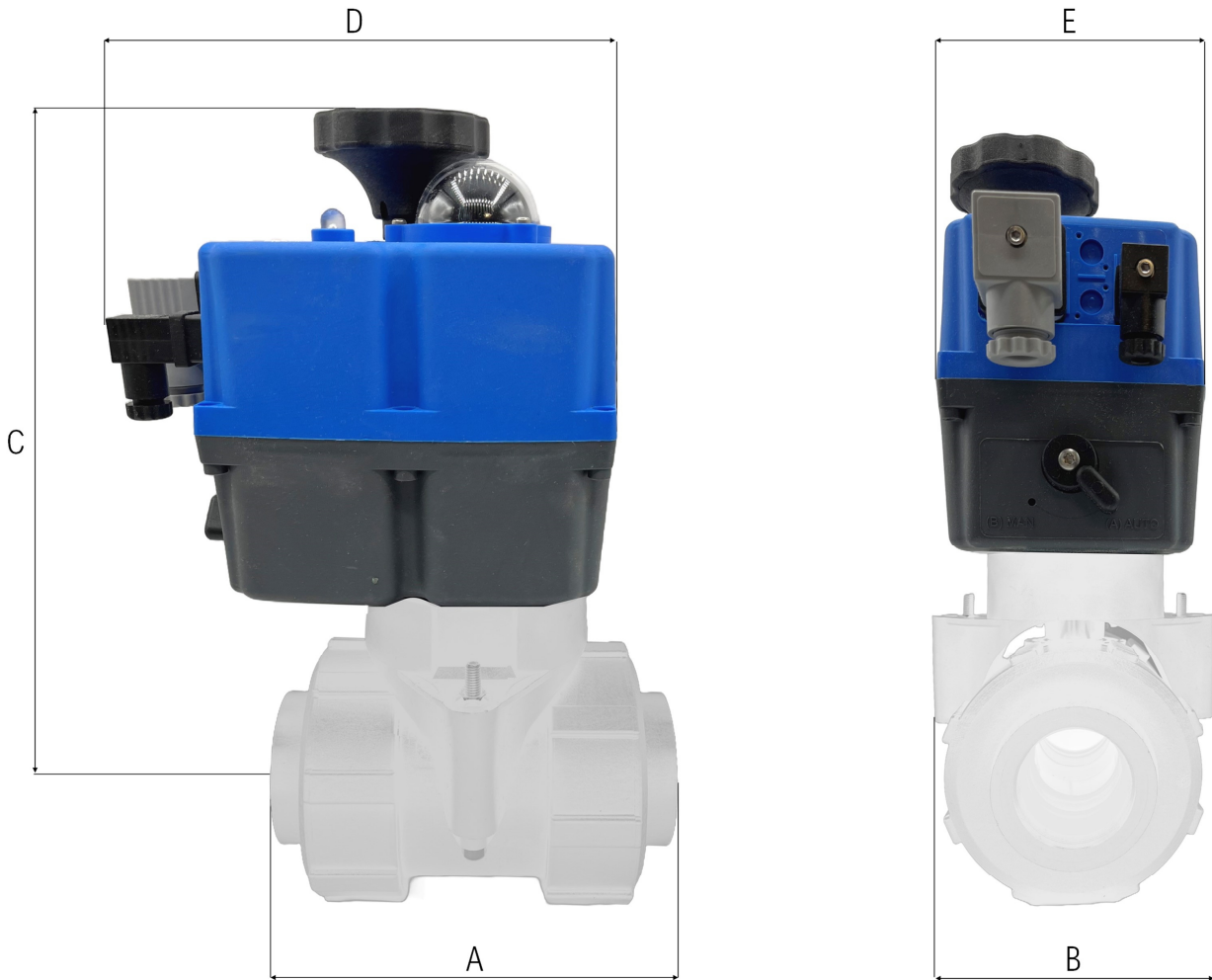


Additional Options Available on-request:

- Flow regulation plate (Material = PVDF)
- Thermal Insulation Extension

Dimensions

VFE2027 - Electrically Actuated 2 Way PVDF Ball Valve



Actuator	VF-0S					
DN	15 1/2"	20 3/4"	25 1"	32 1 1/4"	40 1 1/2"	50 2"
A	130.4	134.7	129.64	142.22	161.4	201
B	91	91	116.27	116.27	140.75	140.75
C	231	231	250	255	261	266
D	189.5	189.5	189.5	189.5	189.5	189.5
E	110	110	110	110	110	110

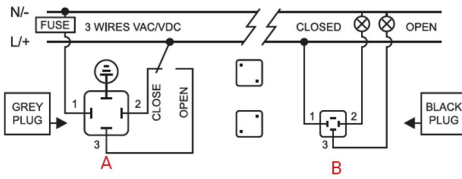
Dimensions in mm

LED Status Indication		
No power	LED off	
Actuator Fully Open	Red Led Solid	
Actuator Fully Closed	Green Led Solid	
Moving Open > Closed	Red and Orange Flash	
Moving Closed > Open	Green and Orange Flash	
Torque lim. Engaged Open > Closed	Red Blinking	
Torque lim. Engaged Closed > Open	Green Blinking	
Manual Mode Engaged	Orange Blinking	
Battery Failsafe Activated Normally Open	Red Intermittent	
Battery Failsafe Activated Normally Closed	Green Intermittent	
Battery Failsafe Needs Charging	Orange Intermittent	
Digital Positioning System Stationary	Blue Solid	
Digital Positioning System Opening	Blue and Green Flash	
Digital Positioning System Closing	Blue and Red Flash	

Standard Electrical Connections

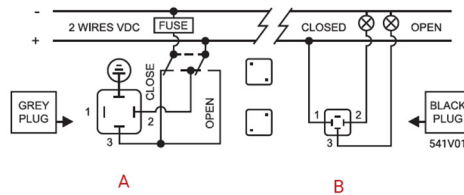
On - Off V AC

VF-0S - VF-1S



On - Off V DC

VF-0S - VF-1S



A = Power supply plug (Grey plug)

Neutral PIN 1 + Phase PIN 2 = Close Actuator

Neutral PIN 1 + Phase PIN 3 = Open Actuator

Earth/ground connection - Flat PIN

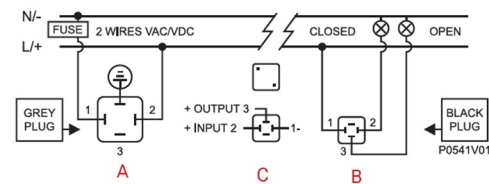
B = Volt free contact plug (Black Plug)

Common PIN 1 + PIN 2 = Close confirmation of position

Common PIN 1 + PIN 3 = Close confirmation of position

Positioner V AC / DC

VF-0S - VF-1S



A = Power supply plug (Grey plug)

Neutral/Negative PIN 1 + Phase/positive PIN 2 - Power Supply

Earth/ground connection - Flat PIN

B = Volt free contact plug (Black Plug)

Common PIN 1 + PIN 2 = Close confirmation of position

Common PIN 1 + PIN 3 = Close confirmation of position

C = Input/output signal (Black plug)

Negative PIN 1 + positive PIN 2 = Input signal

Negative PIN 1 + positive PIN 3 = Output signal

C = Instrumentation signal **MAX 10V**

Digital Positioner System: Earth should not be connected to avoid self adjustment of the actuator position