

## R2MH EX 2/2 way Normally Closed Assisted Lift ATEX Solenoid Valve



### Construction:

- Body: Brass CW617N
- Armature Tube: Stainless Steel AISI 303
- Seals: NBR, FKM, EPDM
- Plunger and Core: Stainless Steel AISI 430FR
- Springs: Stainless Steel AISI 302
- Electrical Housing: Aluminium Epoxy Resin

Maximum allowable pressure: 26bar

Maximum fluid viscosity: 25cSt (mm<sup>2</sup>/s)

Protection class IP66/IP67

Surge suppressor diode included

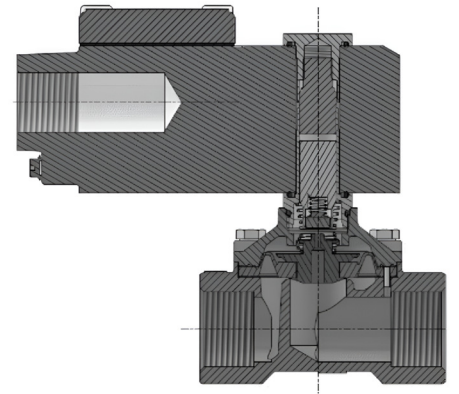
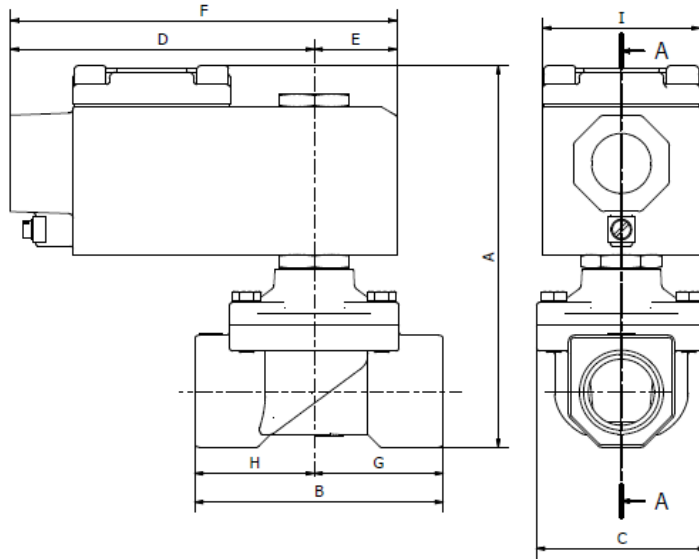


### ATEX protection grade:

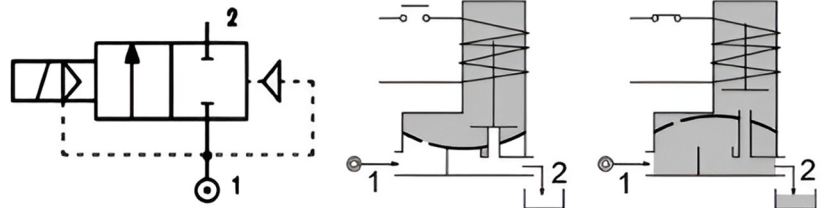
- II 2GD Ex db IIC T6/T5 Gb
- Ex tb IIIC T80°C/T95°C Db, IP66/IP67
- T122 ATEX 278 X
- 40°C<Ta<60°C FOR T6
- 40°C<Ta<70°C FOR T5

ATEX / IECEx system available on request

Stainless Steel AISI 316 ATEX housing on request

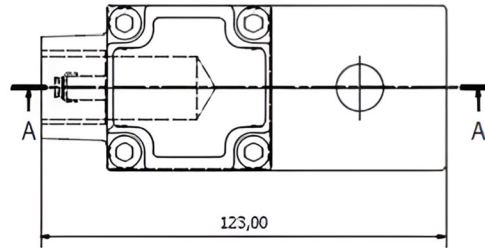
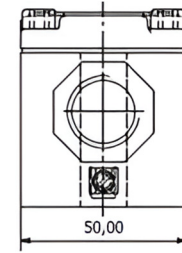
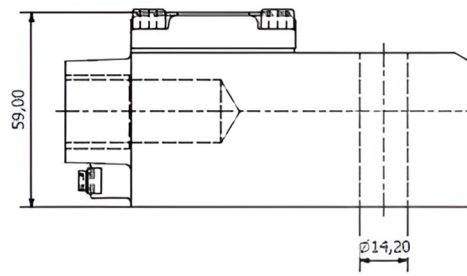


Valve Type	Dimensions								
	A	B	C	D	E	F	G	H	I
R2MH G3/8"	110	59	45	26	97	123	31	28	50
R2MH G1/2"	110	59	45	26	97	123	31	28	50
R2MH G3/4"	121	79	54	26	97	123	41	38	50
R2MH G1"	130	96	72	26	97	123	48	48	50



Code	Port Size ISO 228	Orifice mm	Flow Rate Kvs m <sup>3</sup> /h	Differential Pressure (bar)			Coil		Seal
				min	max. AC (*)	Max.DC (*)	series	width mm	
R2MHCCGV12/EX/Coil	3/8"	13	2.2	0	6	6	50Ax	50	NBR=B
R2MHCDGV12/EX/Coil	1/2"	13	2.5	0	6	6			EPDM=E
R2MHCEGV18/EX/Coil	3/4"	19	5.5	0	6	6			FPM=V

(\*) Performance with voltage tolerance +/-10%



Coil	Coil P/N	Voltage	Nominal Power			Electrical Connection	Connectors
			AC VA Inrush	AC VA Holding	DC Watt		
Series 50Ax Width 50mm	50A1	24V DC/AC	-	-	8	Terminal Box	1/2NPT cable Gland (not included)
	50AD	110V DC/AC	-	-	8		
	50AE	230V DC/AC	-	-	8		

(\*) Other voltages available on request

### Information:

100% ED

Voltage Tolerance: +20% -10%

Bore size: 14mm

Encapsulated Coil

Electrical housing: Aluminium Epoxy Resin

Maximum dissipated power: 30W

Degree of protection: IP66/IP67

### ATEX protection grade:

II 2GD Ex db IIC T6/T5 Gb  
 Ex tb IIIC T80°C/T95°C Db, IP66/IP67  
 T122 ATEX 278 X  
 -40°C<Ta<60°C FOR T6  
 -40°C<Ta<70°C FOR T5

*ATEX / IECEX system available on request*

*Stainless Steel AISI 316 ATEX housing on request*